

Tel: 0300 200 1003
Web: www.surreycc.gov.uk/highways

IMPORTANT – This is not a circular
To the Owner/Occupier

Surrey Highways
Rowan House
Merrow Lane
Guildford
Surrey
GU4 7BQ

10 July 2015

Dear Resident

Re: Closure of Meadowside to facilitate the introduction of a pedestrian refuge island in Rydens Road

It has been suggested that pedestrian facilities are required on Rydens Road in the vicinity of Walton Park, to facilitate crossing the road. A feasibility study has been carried to determine the type and optimum location of the measure, however due to the concentration of driveways and junctions, it has proved impossible to locate a suitable measure in the area where the desire line exists.

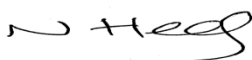
The feasibility did however conclude that a pedestrian refuge island would be the most appropriate solution. To this end it has only been possible to locate such a measure in Rydens Road, in the vicinity of Walton Park, by way of closure of the Meadowside junction to motorised traffic to enable the necessary space required to locate the measure. The existing carriageway closed off in Meadowside area could then be landscaped and new improved footways constructed to link to a new footway across the triangular island in Walton Park. It would also be necessary to culvert a short section of open ditch within the triangular island in Walton Park to enable the construction of the new footway. The Meadowside junction would remain open to pedestrians and cyclists.

Surrey County Council would like to know whether you would support a closure of Meadowside at its junction with Rydens Road. At the same time we are consulting the Emergency Services, and Elmbridge Borough Council, who provide refuse collection and other services to local residents. A previous consultation carried out locally by way of InTouch leaflets has proved inconclusive.

Please could you let us know your views by completing the form overleaf, and returning it in the prepaid envelope provided by **Monday 27th July 2015**. If you have any general comments on this suggestion, please let us know in the space provided.

The results of this survey will be presented to Surrey County Council's Local Committee for Elmbridge, at its meeting on **Monday 14th September 2015**. It is this Local Committee who will decide whether or not to go ahead with the scheme, taking into account the results of this consultation.

Yours Sincerely

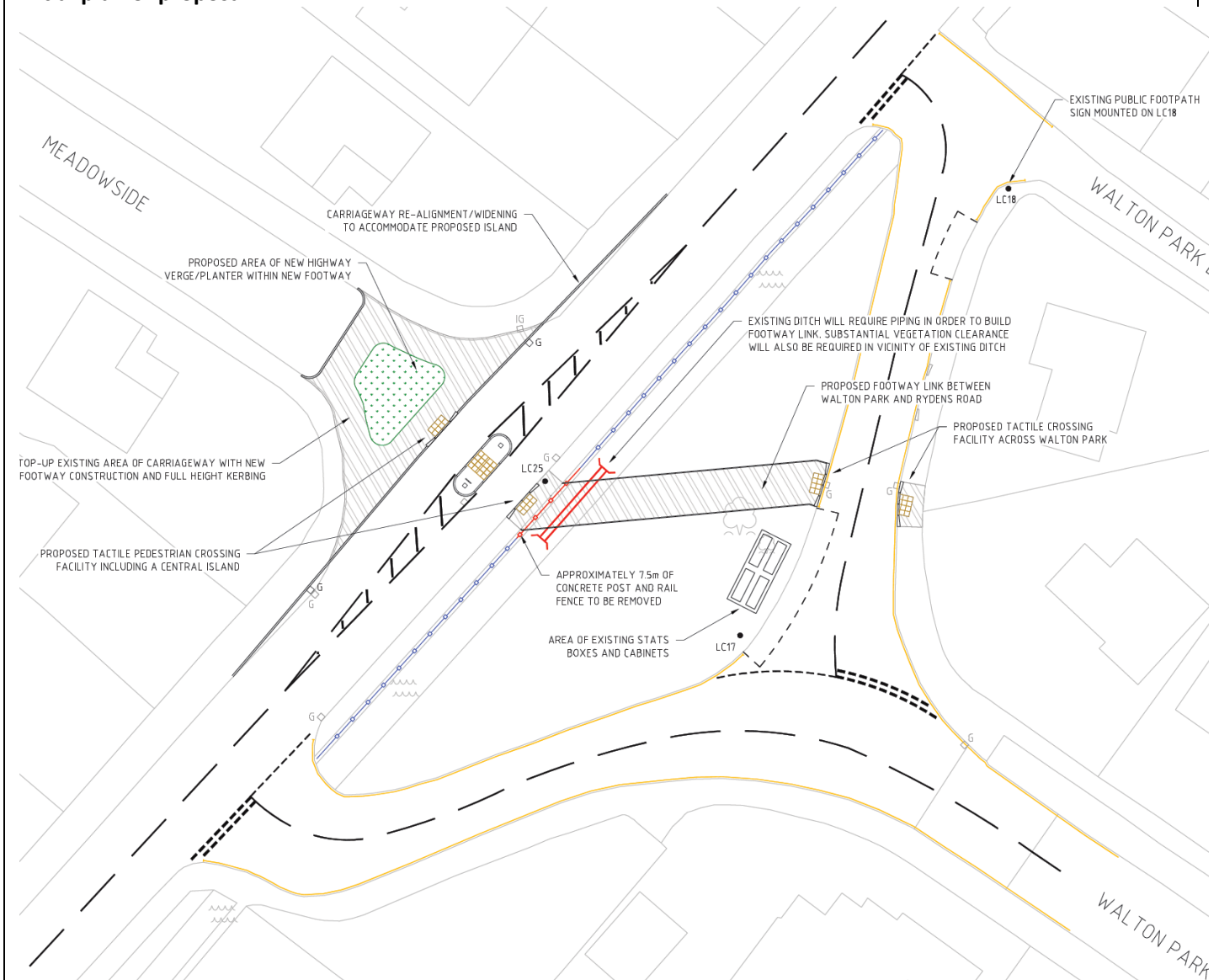


Nick Healey
Area Team 3 (NE) Manager
Surrey Highways

ITEM 12

| | |
|--|-------------|
| Please indicate your support or opposition to the suggested closure of Meadowside to facilitate the introduction of a pedestrian refuge island in Rydens Road. | Please tick |
| I would support the scheme | |
| I would oppose the scheme | |
| <p>Address:</p> <p>Comments:</p> | |

Initial plan of proposal



Please return this form in the pre-paid envelope provided. If you have any other Highways concern please contact:

Email : highways@surreycc.gov.uk Telephone : 0300 200 1003

Surrey County Council Highways, Rowan House, Merrow Lane, Merrow, Guildford, Surrey, GU4 7BQ